

Business Turnover Index (BTI) April 2024. Provisional data

Main results

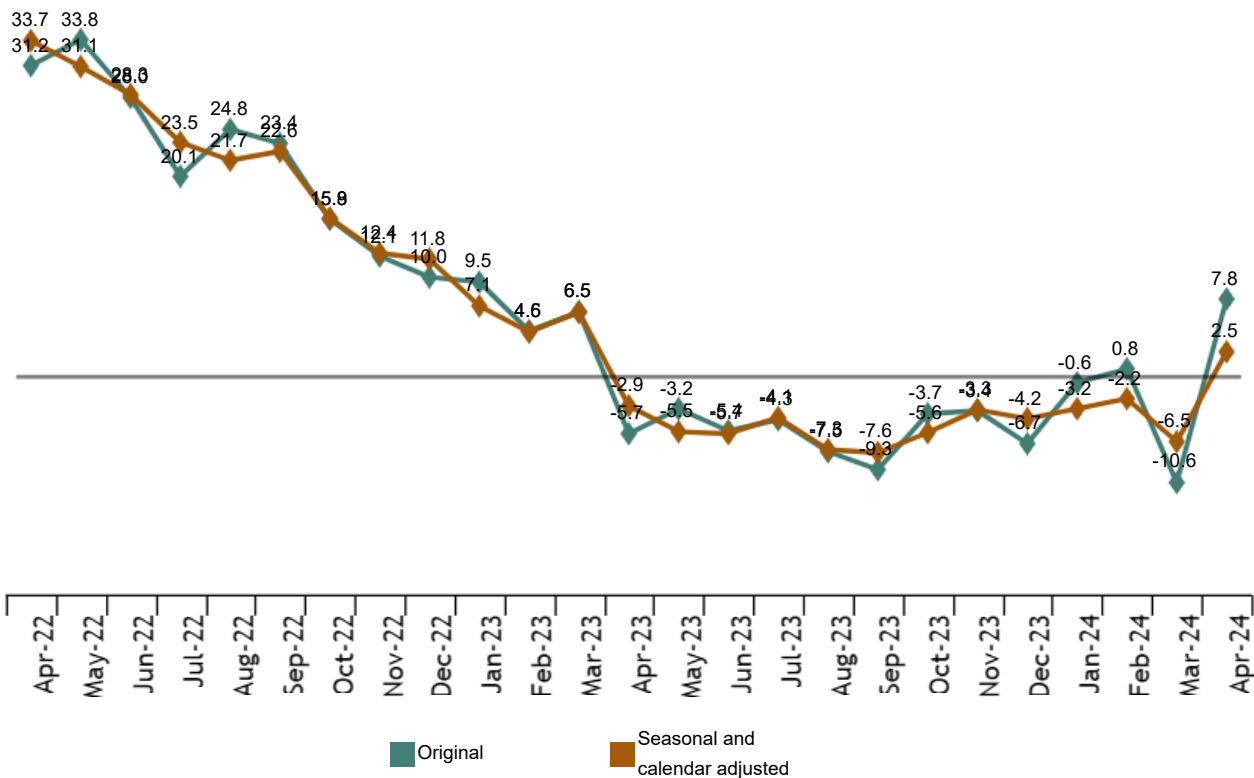
- The annual rate of the Business Turnover Index stood at 2.5% in the series corrected for seasonal and calendar effects and at 7.8% in the original.
- The ICNE recorded a monthly rate of 4.5% without seasonal and calendar effects.

More information

- [Annex of tables](#) (includes information on original and sector-adjusted series)
- [Detailed results](#) (monthly and annual)

The General Business Turnover Index (ICNE), corrected for seasonal and calendar effects, presented a variation of 2.5% in April compared to the same month of the previous year. For its part, the original series experienced an annual rate of 7.8%.

General Business Turnover Index Annual rate. Percentage



Current press release at: <https://www.ine.es/dyngs/Prensa/en/ICNE0424.htm>

The indices corrected for seasonal and calendar effects presented positive annual variation rates in three of the four sectors analysed. *Non-financial market services* recorded the largest increase (5.9%), while the only decrease was in *Electricity and water supply, sanitation and waste management* (-29.2%).

General Business Turnover Index: General and by sectors. April 2024

Annual rate

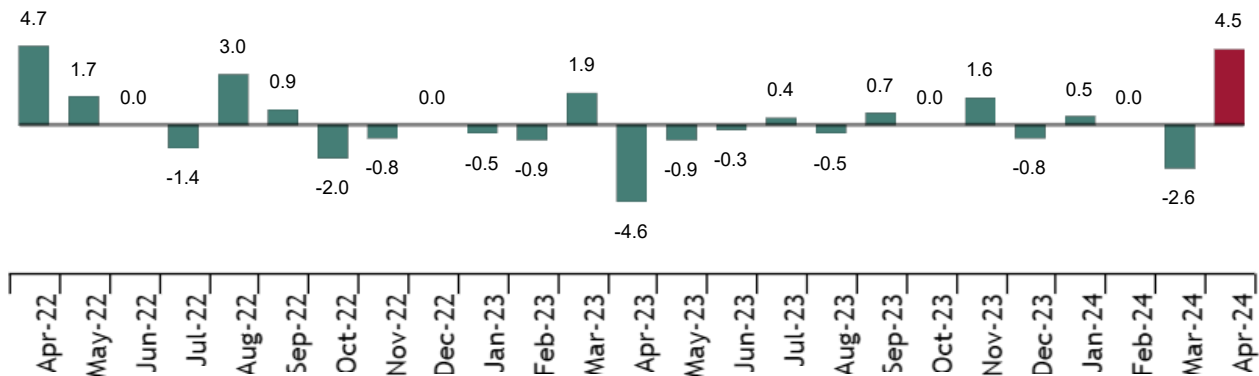
	Unadjusted index	Seasonally and calendar adjusted
	Annual rate (%)	Annual rate (%)
TOTAL INDEX	7.8	2.5
Extractive and manufacturing industries	14.2	1.3
Electricity and water supply, sewerage and waste management	-27.5	-29.2
Construction	9.0	1.8
Trade	8.6	5.9

Monthly evolution of the ICNE

The monthly variation of the ICNE between the months of April and March 2024, eliminating seasonal and calendar effects, was 4.5%. This rate was 7.1 points higher than that of the previous month.

General Business Turnover Index. Seasonally and calendar adjusted

Monthly rate. Percentage



Of the four sectors analysed, all presented positive monthly rates, *Commerce* presented the greatest increase (3.3%) followed by *Electricity and water supply, sanitation and waste management* (2.2%)

Revisions and data updates

The INE has today updated the ICNE data for the last 13 months. In the case of the series adjusted, the series have been reviewed from the beginning, following the INE standard. All the results of this operation are available at [INEbase](#).

Current press release at: <https://www.ine.es/dyngs/Prensa/en/ICNE0424.htm>

Methodological note

The Business Turnover Index (BTI) is a short-term synthesis statistical operation aiming at obtaining an indicator to measure the short-term evolution of turnover, as a whole, for non-financial economic sectors: *Extractive and manufacturing industries, Electrical energy and water, Trade and Non-financial services*.

Survey Type: continuous monthly survey.

Base year: 2021.

Population scope: turnover of the economic sectors *Extractive and manufacturing industries, Electricity and water supply, sanitation and waste management, Commerce and non-financial market services*.

Geographical scope: the whole national territory.


Results reference period: the calendar month.

Information sources: it is compiled using information from three statistical operations carried out by INE: Industry turnover indices (ITI), service sector activity indicators (SSAI) and retail trade indices (RTI). In addition, existing information from administrative registers is utilized: sales declared by large companies in their VAT returns in the sector not covered by the surveys previously mentioned.

Further information is available in the [methodology](#) and the [standardized methodological report](#).

INE's statistics are produced according to the European Statistics Code of Practice. For further information at [Quality at INE and Code of Practice](#).

For further information see [INEbase](#)

Official INE account on  [@es_ine](#)

All press releases at: www.ine.es/en/prensa/prensa_en.htm

 Press office: (+34) 91 583 93 63 / 94 08 – gprensa@ine.es

 Information area: (+34) 91 583 91 00 – www.ine.es/infoine/?L=1