

Industrial Turnover Indices (ITI) December 2024 and year 2024. Provisional data

Main results

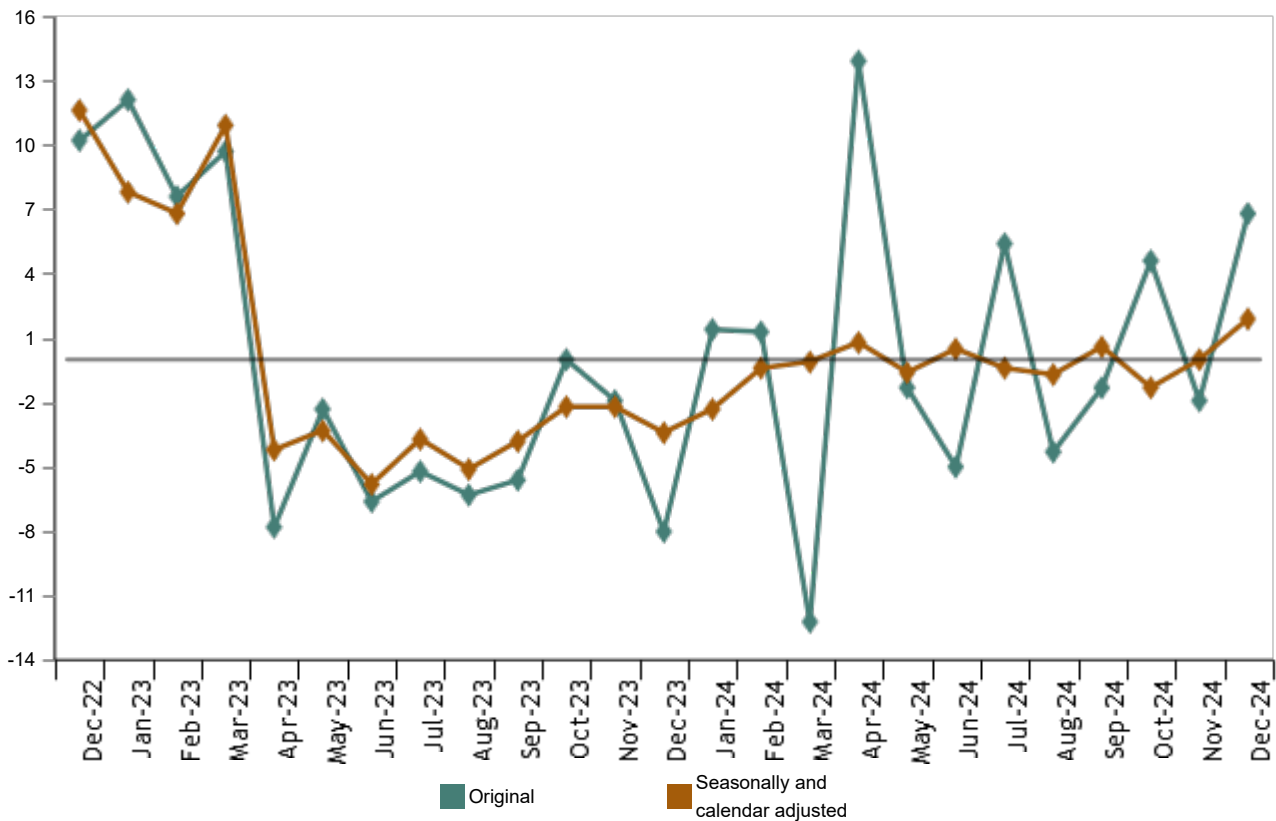
- The annual rate variation of the Total Industrial Turnover Index stands at 1.9% in the seasonal and calendar adjusted and 6.8% in the original.
- The monthly variation stands at 0.9%, after seasonal and calendar adjustment.
- Throughout the year 2024, the business turnover increases by -0.2% in the adjusted series and 0.4% in the original series.

More information

- [Tables annex](#) (includes information by autonomous communities and original and adjusted series by sectors)
- [Detailed results](#) (monthly and annual data)

The Industrial Turnover Index (ITI), once adjusted for seasonal and calendar effects, showed in December a variation of 1.9% as compared with the same month of the previous year. The ITI original series registered an annual variation of 6.8%.

Industrial Turnover Index Annual rate. Percentage



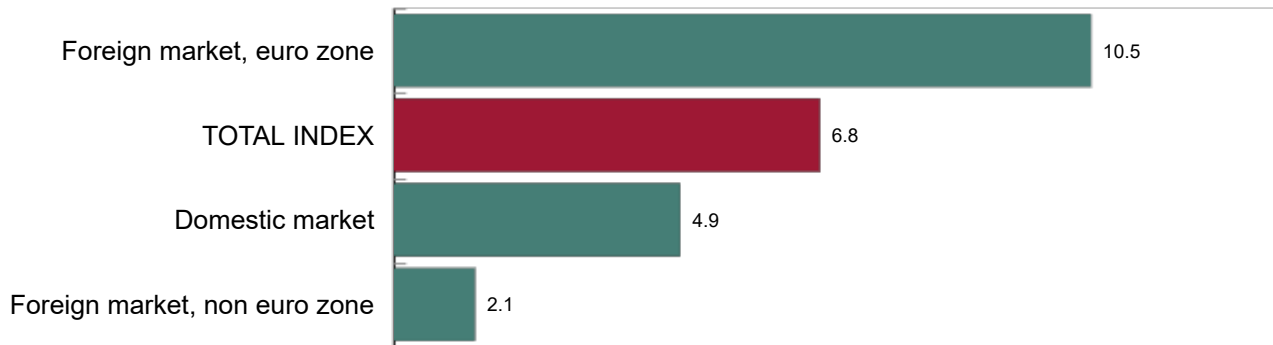
Current press release at: <https://www.ine.es/dyngs/Prensa/en/ICN1224.htm>

Throughout the year 2024, the industrial Turnover Index, once adjusted for seasonal and calendar effects, increased by -0.2% as compared with 2023, and by 0.4% in the original series.

By market, all markets showed positive annual rates in December. It is worth noting the increase registered in the euro area in the foreign market (10.5%).

Industrial Turnover Index, Total and by market. December 2024

Annual rate. Percentage

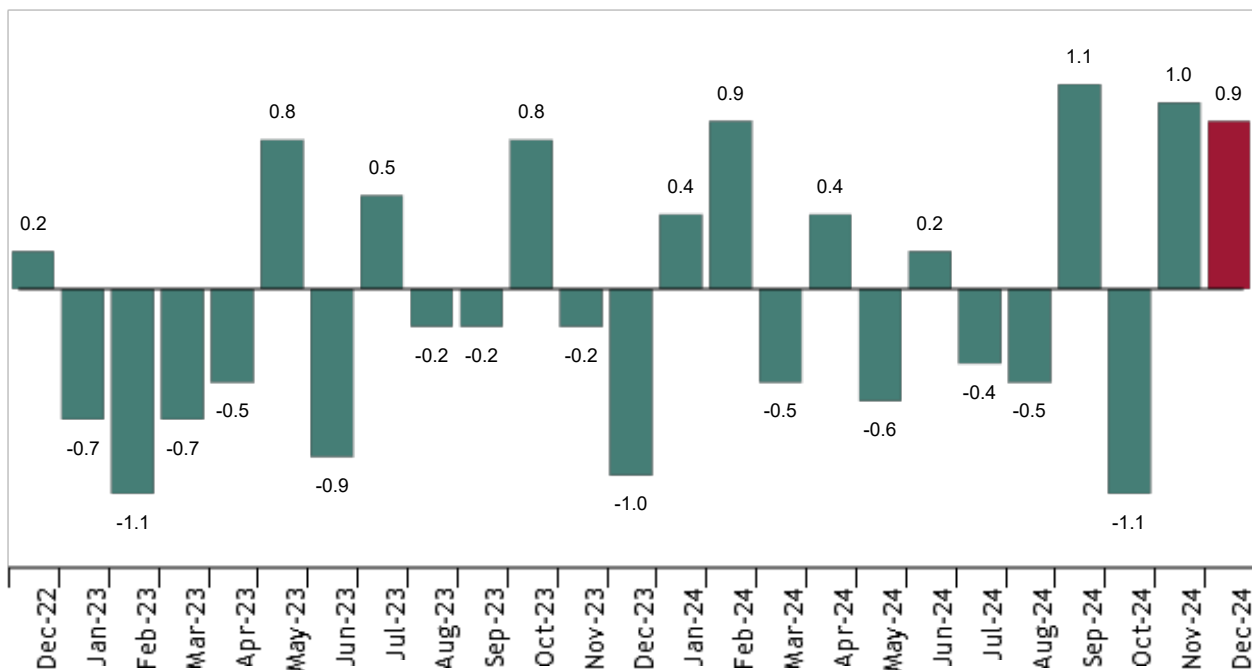


Monthly trend of ITI

The monthly variation of the seasonally and calendar adjusted Total Industrial Turnover Index between the months of December and November, stood at 0.9%. This rate was a tenth lower than the previous month.

Industrial Turnover Index, Total. Seasonally and calendar adjusted.

Monthly rate. Percentage



By Main Industrial Groupings (MIGs), *Capital goods* (2.7%), *Intermediate goods* (0.9%) and *Durable consumer goods* (0.1%) showed positive monthly rates. On the other hand *Energy* (-0.8%) and *Non-durable consumer goods* (-0.1%) showed negative monthly rates.

Current press release at: <https://www.ine.es/dyngs/Prensa/en/CN1224.htm>

Results by Autonomous Community. Original series

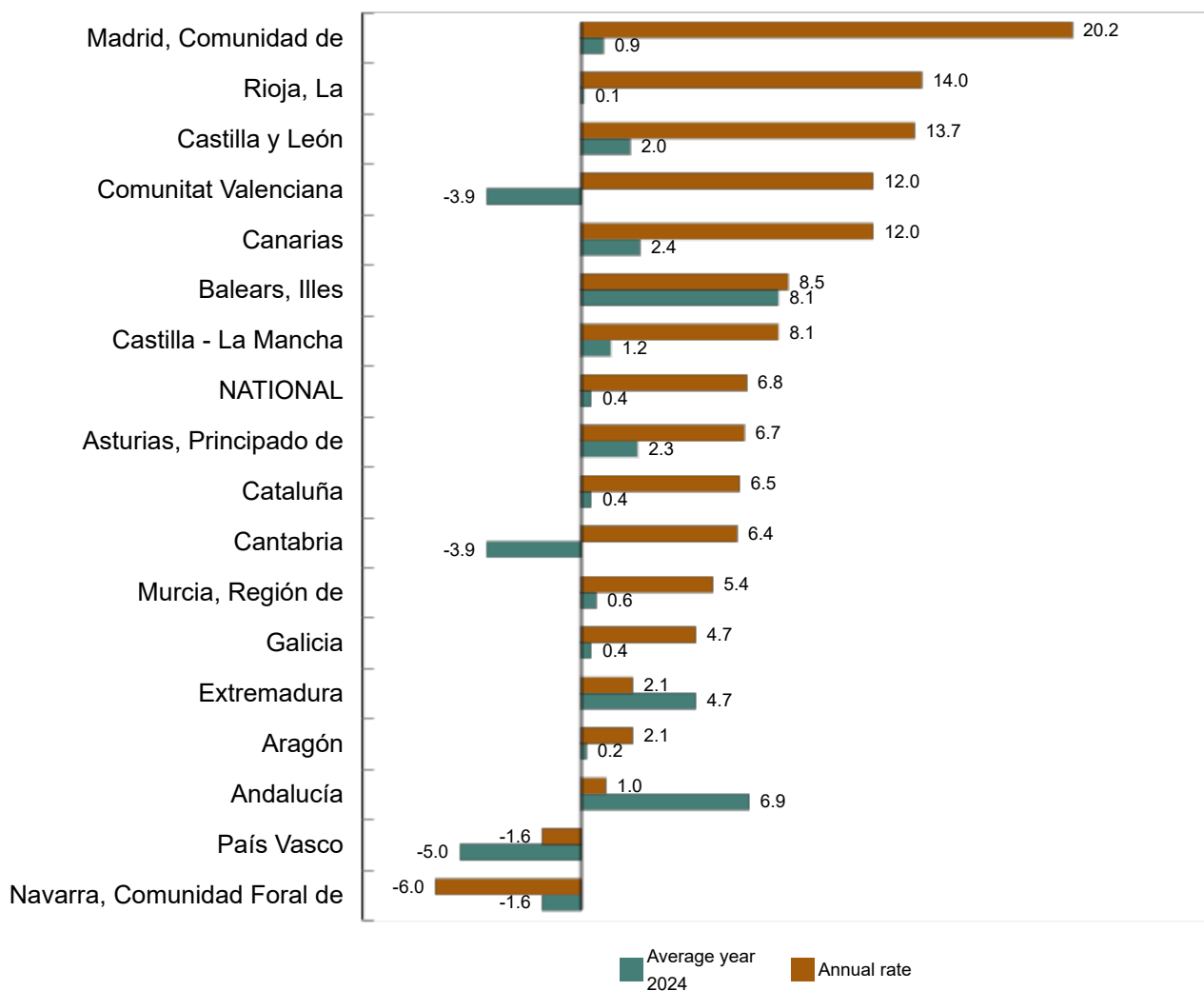
Turnover increased as compared to December 2023 in 15 Autonomous Communities and decreased in the other two.

The largest increases were recorded in Comunidad de Madrid (20.2%), La Rioja (14.0%) and Castilla y León (13.7%).

The largest decreases were recorded in Comunidad Foral de Navarra (-6.0%) and País Vasco (-1.6%).

Industrial Turnover Index, Total and by Autonomous Community. December 2024

Percentage



Current press release at: <https://www.ine.es/dyngs/Prensa/en/CN1224.htm>

Throughout the year 2024, the turnover increased in 13 Autonomous Communities and decreased in the other four.

The largest increases were recorded in Illes Balears (8.1%), Andalucía (6.9%) and Extremadura (4.7%). The largest decreases were recorded in País Vasco (-5.0%), Cantabria and Comunitat Valenciana (-3.9%, in both cases).

Revisions and data update

On the press release day, INE has updated ITI data series corresponding to the last 13 months. In the case of calendar adjusted and seasonally and calendar adjusted series, according to INE standard, series are revised since its beginning. Results are available at [INEBase](#).

Methodological note

The Industrial Turnover Indices (ITI) aim to measure the evolution of the activity of companies that are part of the industrial sector in Spain, based on their turnover figures. This information is also requested broken down by market.

Survey Type: ongoing monthly.

Base year: 2021.

Population scope: units of economic activity whose main activity is included in Sections B: Extractive industries (with the exception, due to their not being relevant to Spanish industry, of division 09) or C: Manufacturing industry of CNAE-2009.

Geographical scope: the whole country, excluding Ceuta and Melilla.

Sample size: Approx. 12,000 establishments.


Data collection: monthly, value of total business turnover broken down by market.

Collection method: fill in a questionnaire by the respondent using one of the following methods: internet (IRIA system), email, fax, telephone or post.

Further information is available in the [methodology](#) and in the [standardised methodological report](#).

INE's statistics are produced according to the European Statistics Code of Practice. For further information at [Quality at INE](#) and [Code of Practice](#).

For further information see [INEbase](#)

Official INE account on  [@es_ine](#)

All press releases at: www.ine.es/en/prensa/prensa_en.htm

 Press office: (+34) 91 583 93 63 / 94 08 – gprensa@ine.es

 Information area: (+34) 91 583 91 00 – www.ine.es/infoine/?L=1