

21 November 2024

## Industrial Turnover Indices (ITI) September 2024. Provisional data

### Main results

- The annual rate variation of the Total Industrial Turnover Index stands at 0.3% in the seasonal and calendar adjusted and -1.3% in the original.
- The monthly variation stands at 1.0%, after seasonal and calendar adjustment.

### More information

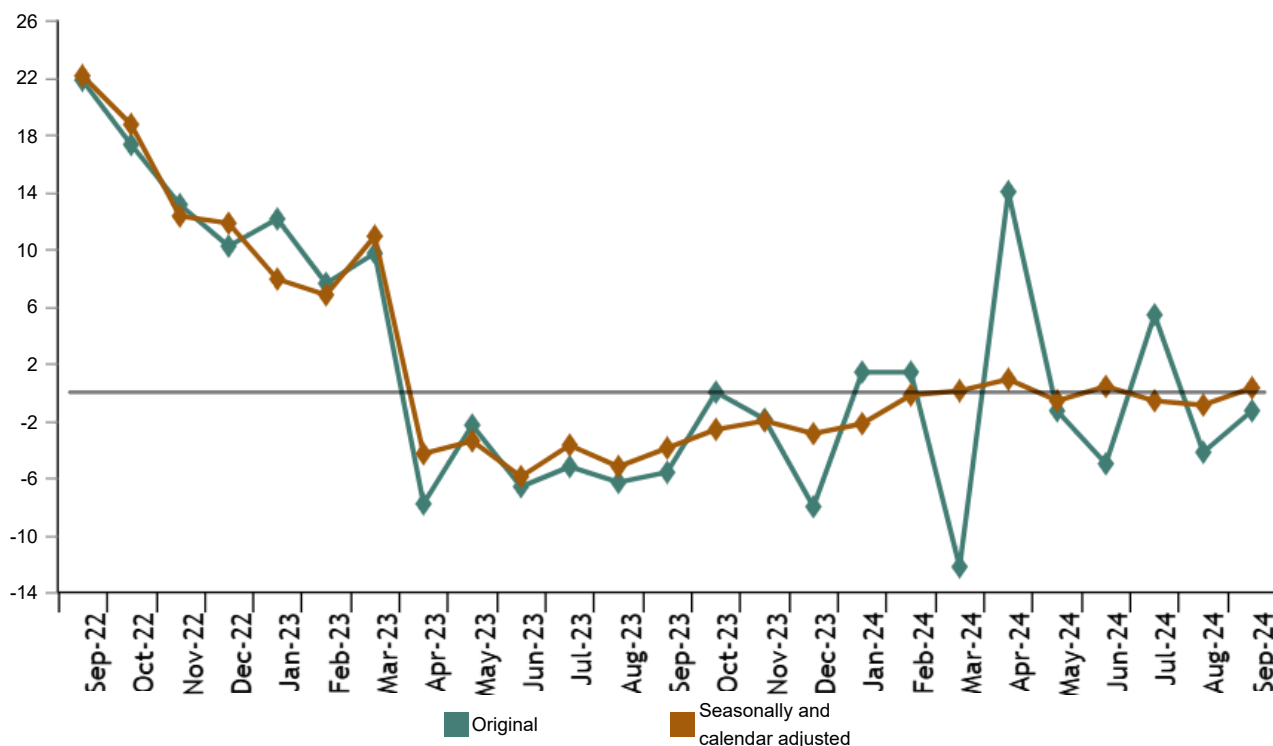
- [Tables annex](#) (includes information by autonomous communities and original and adjusted series by sectors)
- [Detailed results](#) (monthly and annual data)

The Industrial Turnover Index (ITI), once adjusted for seasonal and calendar effects, showed in September a variation of 0.3% as compared with the same month of the previous year.

The ITI original series registered an annual variation of -1.3%.

#### Industrial Turnover Index, Total

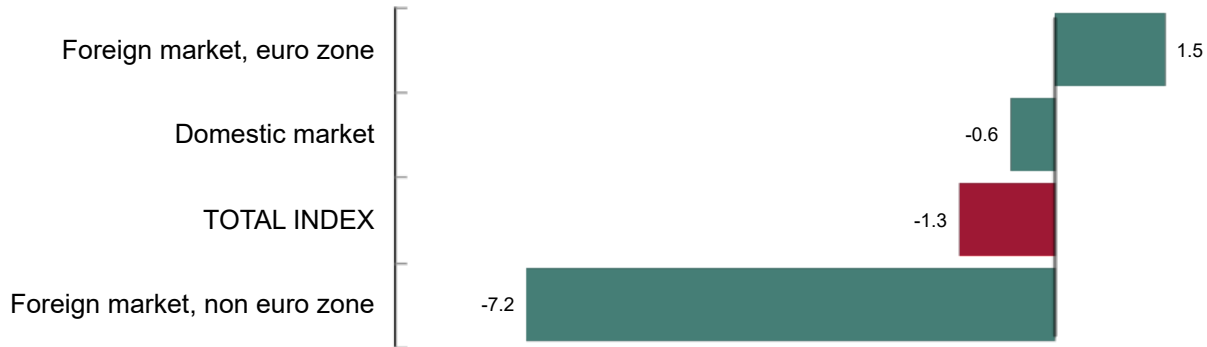
Annual rate. Percentage



By market, negative annual rates were observed in two of the analysed markets in September. It is worth noting the decrease registered in the non euro area in the foreign market (-7.2%).

### Industrial Turnover Index, Total and by market. September 2024

Annual rate. Percentage

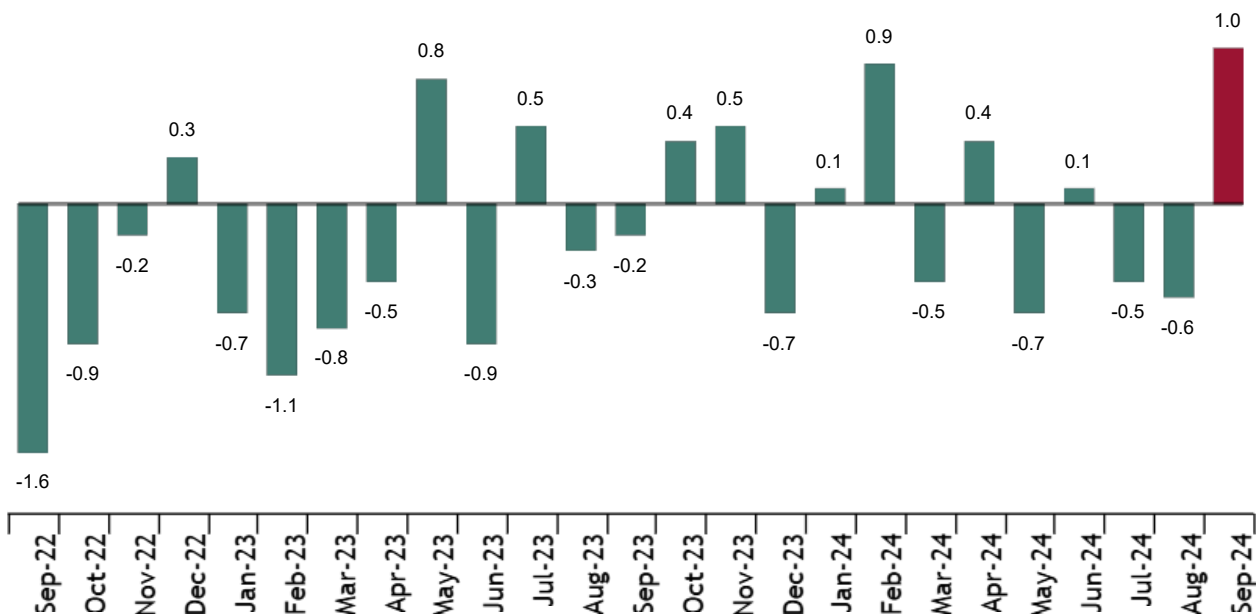


### Monthly trend of ITI

The monthly variation of the seasonally and calendar adjusted Total Industrial Turnover Index between the months of September and August, stood at 1.0%. This rate was 1.6 points higher than the previous month.

### Industrial Turnover Index, Total. Seasonally and calendar adjusted

Monthly rate. Percentage



By Main Industrial Groupings (MIGs), four of the five sectors showed positive monthly rates. It is worth highlighting the increase in *Capital goods* (5.9%). The only sector that decreased was *Energy* (-8.8%).

## Results by Autonomous Community. Original series

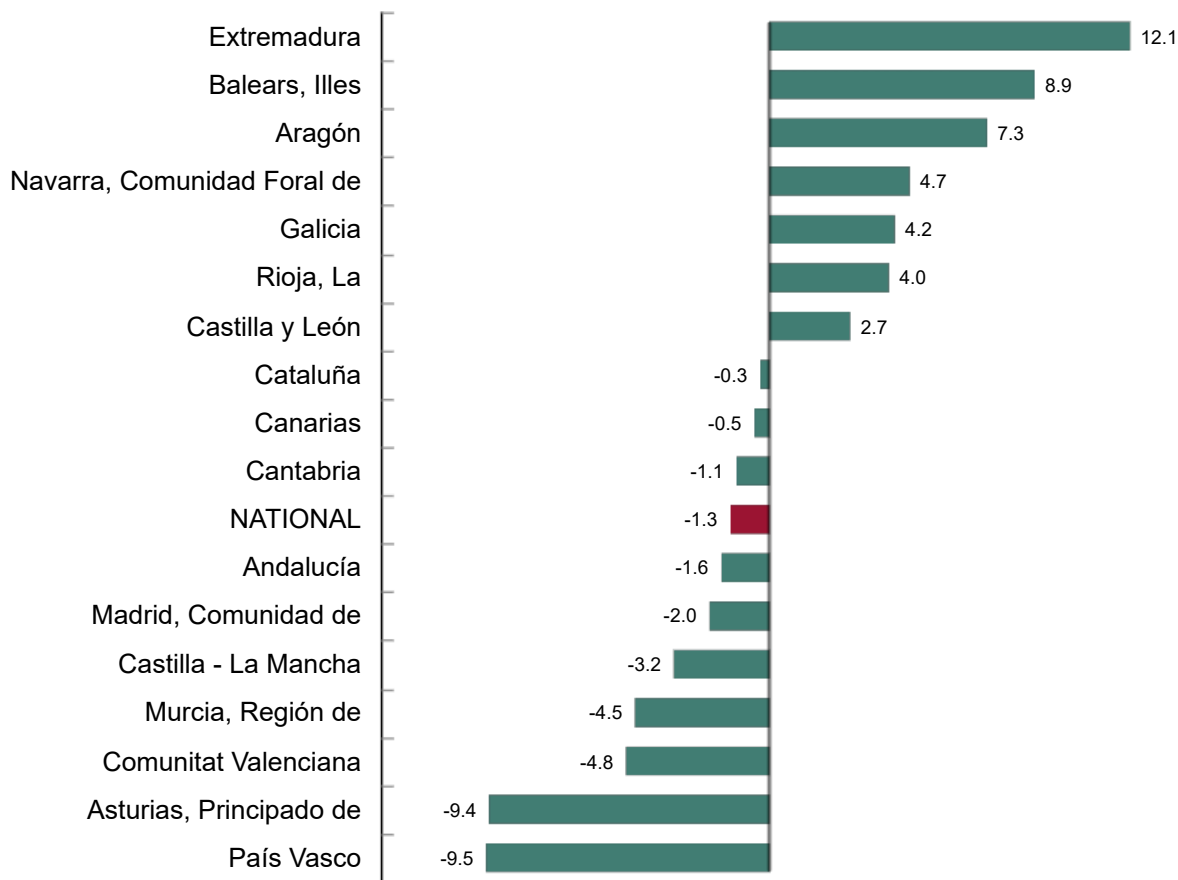
Turnover increased as compared to September 2023 in seven Autonomous Communities and decreased in the other 10.

The largest increases were recorded in Extremadura (12.1%), Illes Balears (8.9%) and Aragón (7.3%).

The largest decreases were recorded in País Vasco (-9.5%), Principado de Asturias (-9.4%) and Comunitat Valenciana (-4.8%).

## Industrial Turnover Index, Total and by Autonomous Community. September 2024

Annual rate. Percentage



## Revisions and data update

On the press release day, INE has updated ITI data series corresponding to the last 13 months. In the case of calendar adjusted and seasonally and calendar adjusted series, according to INE standard, series are revised since its beginning. Results are available at [INEbase](https://www.ine.es/dyngs/Prensa/en/ICN0924.htm).

## Methodological note

Industrial Turnover Indices (ITI) are short-term indicators aiming at measuring the monthly evolution of the industrial sector, excluding the construction.

The required information is collected since January 2002 through a survey addressed to more than 12.000 industrial establishments throughout the country.

**Survey Type:** ongoing monthly.

**Base year:** 2021.

**Population scope:** units of economic activity whose main activity is included in Sections B: Extractive industries (with the exception, due to their not being relevant to Spanish industry, of division 09) or C: Manufacturing industry of CNAE-2009.

**Geographical scope:** the whole country, excluding Ceuta and Melilla.

**Sample size:** Approx. 12,000 establishments.

**Data collection:** monthly, value of total business turnover broken down by market.


**Collection method:** fill in a questionnaire by the respondent using one of the following methods: internet (IRIA system), email, fax, telephone or post.

Further information is available in the [methodology](#) and in the [standardised methodological report](#).

INE's statistics are produced according to the European Statistics Code of Practice. For further information at [Quality at INE](#) and [Code of Practice](#).

---

For further information see **INEbase**

Official INE account on  [@es\\_ine](#)

---

All press releases at: [www.ine.es/en/prensa/prensa\\_en.htm](http://www.ine.es/en/prensa/prensa_en.htm)

 Press office: (+34) 91 583 93 63 / 94 08 – [gprensa@ine.es](mailto:gprensa@ine.es)

 Information area: (+34) 91 583 91 00 – [www.ine.es/infoine/?L=1](http://www.ine.es/infoine/?L=1)