

## Services Sector Activity Indicators (SSAI) December 2024. Provisional data

### Main results

- The annual variation of the Market Services Sector turnover index was 3.5% in the calendar and seasonally adjusted series.
- In December, the monthly rate was 1.4% if seasonal and calendar effects are removed.
- For the year 2024 as a whole, the turnover index increased by 2.7% in the seasonally and calendar-adjusted series and by 3.0% in the original series.

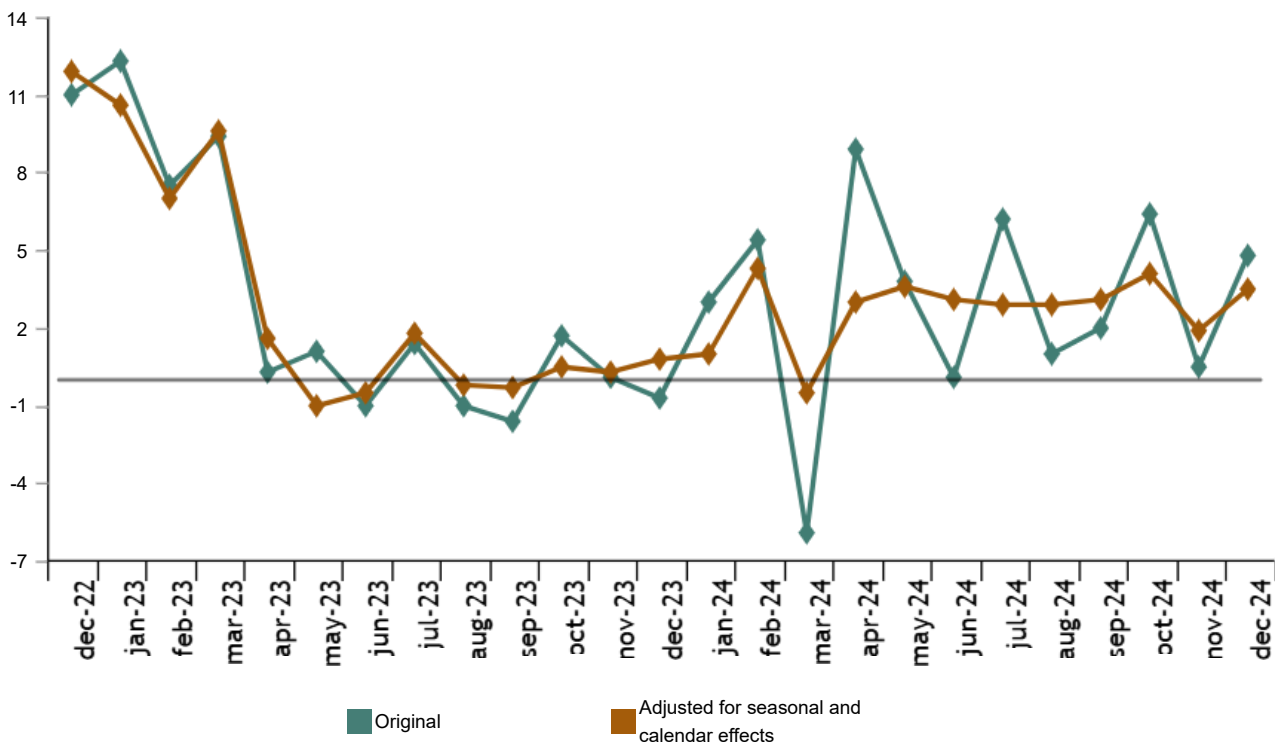
### More information

- [Tables annex](#) (includes information by autonomous communities and original and adjusted series by sectors)
- [Detailed results](#) (monthly and annual data)

The general index of the turnover for the Market Services Sector, after adjusting for seasonal and calendar effects, experienced a variation of 3.5% in December compared to the same month of 2023. This rate was 1.6 points higher than that recorded in November.

The original series presented an annual variation of 4.8%, which was 4.3 points above that registered in November.

### General index of turnover for the Market Services Sector Annual Rate. Percentage



**Annual rates in Turnover index for the Market Services Sector: General and by sector. December 2024**

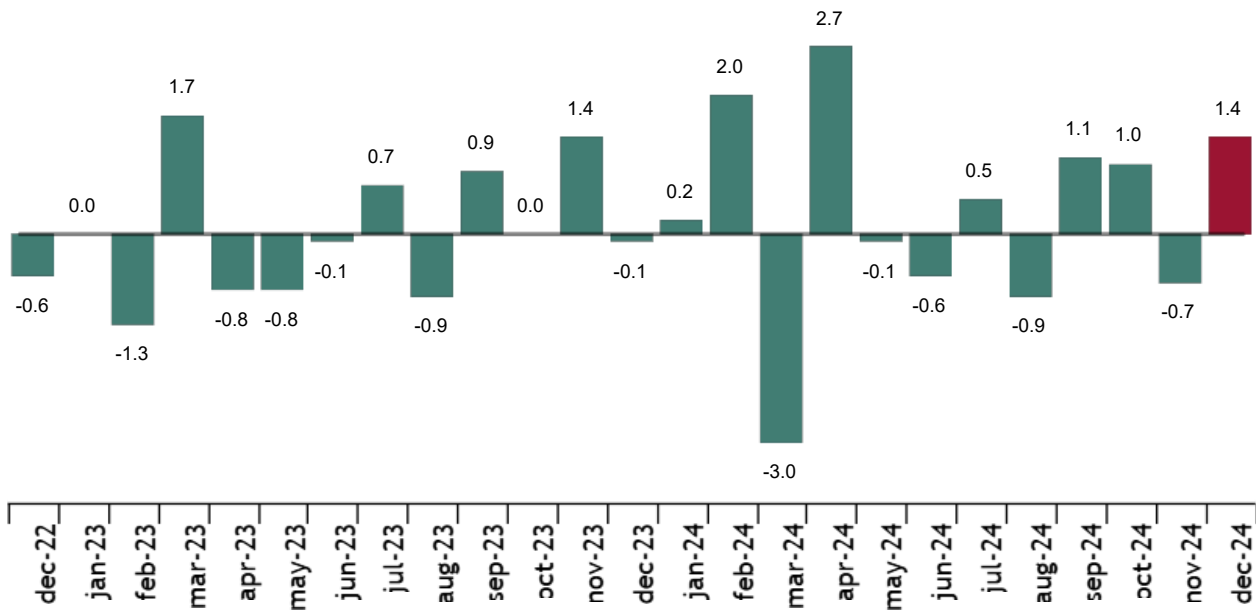
	Original index	Seasonally adjusted index	
	Annual rate (%)	Annual rate (%)	Average year
<b>GENERAL INDEX</b>	4.8	3.5	2.7
<b>1. TRADE</b>	4.4	2.8	1.1
<b>2. OTHER SERVICES</b>	5.4	4.9	5.7

In 2024 as a whole, turnover increased by 2.7% in the series adjusted for seasonal and calendar effects, and by 3.0% in the original series.

**Monthly trend in turnover for the Market Services Sector**

After adjusting for seasonal and calendar effects, the monthly variation of the general index of turnover for the Market Services Sector between December and November was 1.4%. This rate was 2.1 points higher than that observed in November.

**General index of the turnover for the Market Services Sector. Seasonally and calendar adjusted**  
Monthly rate. Percentage



**Results by Autonomous Community. Annual variation rates of the turnover index. Original series**

All Autonomous Communities increased the Turnover index for the Market Services Sector in December as compared to 2023.

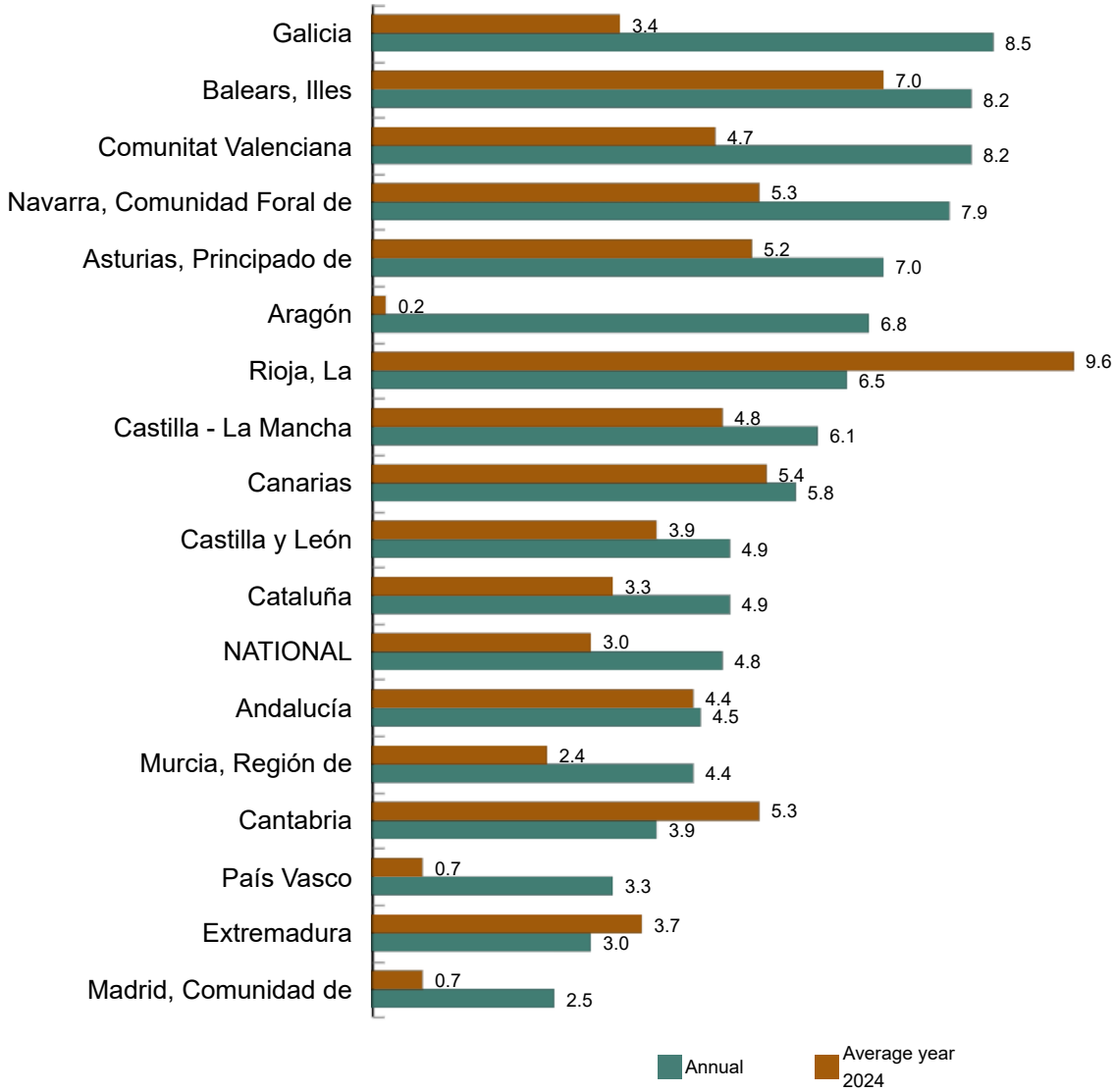
Galicia (8.5%), Illes Balears (8.2%) and Comunitat Valenciana (8.2%) registered the largest increases. Comunidad de Madrid (2.5%), Extremadura (3.0%) y País Vasco (3.3%) recorded the lowest increases.

Current press release at: <https://www.ine.es/dyngs/Prensa/en/IAS1224.htm>

In the year 2024 as a whole, all the Autonomous Communities presented positive rates. La Rioja recorded the highest increase (9.6%).

**General index of Market Services Sector Turnover by Autonomous Community. December 2024**

Annual Rate. Percentage



Current press release at: <https://www.ine.es/dyngs/Prensa/en/IAS1224.htm>

**Employment trend**

The Employment in the Market Services Sector index experienced a variation of 1.7% in December as compared to the same month of the previous year. This rate was two tenths higher than that registered in November.

Over the year 2024 as a whole, employment recorded an average increase of 1.8%.

## National Indices of employed personnel by sector. December 2024



	Index	Rate (%)		
		Monthly	Annual	Average year
<b>GENERAL INDEX</b>	107.6	-0.3	1.7	1.8
<b>1.TRADE</b>	106.7	0.2	1.6	1.7
<b>2.OTHER SERVICES</b>	108.1	-0.6	1.7	1.8

## Review and update of data

The INE has updated the IASS data for the last five months. In the case of the series adjusted, the series have been reviewed from the beginning, following the INE standard. All results of this operation are available on [INEbase](#).

## Methodological note

The Service Sector Activity Indicators (IASS) measure the short-term evolution of the activity of companies belonging to the non-financial market Services through two variables: turnover and employed personnel. The turnover includes the amounts invoiced by the company for the provision of services and sale of goods. Employed personnel include both paid and unpaid personnel.

To obtain it, a continuous survey is carried out that investigates more than 27,000 companies that operate in this sector every month. The results are presented in the form of indices with the aim of measuring variations with respect to the base year 2021.

The characteristics of this statistic are:

**Type of survey:** continuous monthly survey.

**Base year:** 2021.

**Population scope:** companies whose main activity is described in sections G, (Commerce), H (Transportation and Storage), I (Hospitality), J (Information and Communications), L (Real Estate Activities), M (Professional Activities, Scientific and Technical) and N (Administrative Activities and Auxiliary Services) of the National Classification of Economic Activities (CNAE-09).

**Geographic scope:** all the national territory except for Ceuta and Melilla, for which it is only collected in division 47 of CNAE-09 (retail trade).

**Sample size:** 27,500 companies

**Sampling type:** stratified random sampling.


**Collection method:** internet (IRIA system), administrative register, e-mail, fax, telephone or by postal mail.

More information on the [methodology](#) and the [standardised methodological report](#).

INE statistics are produced in accordance with the Code of Good Practice for European Statistics. More information on [Quality at INE](#) and the [Code of Best Practices](#).

---

For further information see [INEbase](#)

Official INE account on  [@es\\_ine](#)

---

All press releases at: [www.ine.es/en/prensa/prensa\\_en.htm](http://www.ine.es/en/prensa/prensa_en.htm)

 Press office: (+34) 91 583 93 63 / 94 08 – [gprensa@ine.es](mailto:gprensa@ine.es)

 Information area: (+34) 91 583 91 00 – [www.ine.es/infoine/?L=1](http://www.ine.es/infoine/?L=1)